

# Find Yourself @TanenbaumCHAT



Admissions  
September 2025

[www.tanenbaumchat.org/apply](http://www.tanenbaumchat.org/apply)

Application deadline: December 1, 2024

TanenbaumCHAT is open to all students of the Jewish community who meet our entrance requirements.

## Admissions Timeline – September 2025 entry

- **September 2024:**  
Online application opens  
A fee of \$1,000 must accompany each application (\$250 non-refundable, \$750 tuition deposit).
- **September 2024 to February 2025:**  
Student interviews
- **Tuesday, October 8, 2024:**  
Parent Open House
- **December 1, 2024:**  
Application Deadline  
Applications received after this date will be placed into a wait pool and reviewed in May 2025.  
A late fee of \$500 will apply and we cannot guarantee that space will be available.
- **Sunday, November 3 OR Sunday, December 8, 2024:**  
Mandatory Placement Tests
- **Friday, February 21, 2025**  
OFFER DAY
- **Friday, February 28, 2025 – Deadline for returning offers**  
A \$1,000 confirmation deposit, which will be credited towards tuition, must accompany the acceptance.

Grade 8 student tours will take place in the fall.

Contact our team at: [findyourself@tanenbaumchat.org](mailto:findyourself@tanenbaumchat.org)

Zanele Minsker Director of Admissions 416-636-5984 x 292	Shauna Kipper Associate Director of Admissions 416-636-5984 x 291
Carly Reed Recruitment Officer 416-636-5984 x 355	Ellie Reinblatt Admissions Coordinator 416-636-5984 x 479



## Welcome to TanenbaumCHAT

Dr. Jonathan Levy, Head of School

**T**anenbaumCHAT is a journey – one that begins on the first day of Grade 9 and lasts a lifetime!

As Toronto’s community Jewish high school, our school fulfills a unique role in the Jewish life of the city. Our students come from virtually every corner of the GTHA and represent a wide range of Jewish backgrounds. We welcome students from our feeder Jewish day schools as well as from many public and independent schools. They come for a premier Jewish high school experience that features an exceptional academic and extracurricular program grounded in Jewish values and community.

In TanenbaumCHAT’s safe and supportive environment, our students make new friends, try new things, and are exposed to new ideas – and they have a great time doing it! Our highly qualified and caring educators allow our students to acclimate to high school, help them develop strong skills, and nurture them to fulfill their potential and grow into who they wish to become.

Guided by core values, a commitment to the State of Israel and a dedication to *tikun olam* (“repairing the world”), our students learn that they are part of a larger local and global community. When they graduate, they are eminently well prepared with the foundational skills to be successful in university, college or whatever path they wish to follow. They join more than 9,500 alumni who maintain strong connections to our school, to their TanenbaumCHAT friends, and to their fellow graduates.

For three generations, Toronto’s Jewish community has relied on TanenbaumCHAT to equip our young people with the insights, knowledge and skills to take their places in the world and to become tomorrow’s leaders. We welcome you to be part of this incredible journey and hope you find yourself at TanenbaumCHAT!



# לימודי יהדות / Jewish Studies

**T**he TanenbaumCHAT family encompasses a wide range of observance and traditions. We celebrate this diversity of Jewish expression in our school and, unquestionably, are richer for it.

We're committed to making Jewish Studies lively and relevant. In fact, many courses are unique to our school and were developed with today's students in mind.

Our Jewish Studies program has four pillars:

- Tanach (Bible)
- Jewish History
- Ivrit (Hebrew language)
- Rabbinics (Rabbinic literature and Jewish traditions)

The program provides an essential foundation of Jewish knowledge, and allows students to address challenging questions about antisemitism, God, ethical dilemmas and differences among Jews.

There is also an opportunity to study Talmud (Jewish Law) and in Grade 12, numerous electives allow students to explore areas of particular interest.

Engaging creatively with Jewish texts advances critical thinking and capacity to ask insightful questions. Our students – and our alumni once in university – demonstrate clearly that the interpretive and analytical skills honed in Jewish Studies are highly transferable to a broad range of academic subjects, and to other areas of life. To ensure that each child is challenged and can thrive, we offer various levels of learning.

Our students' experience is further enhanced by hearing guest speakers, attending a Shabbaton (weekend retreat), as well as celebrating as a community and marking important days together, such as: Jewish holidays, Yom HaAtzmaut (Israel Independence Day), Yom HaZikaron (Memorial Day), and Yom HaShoah (Holocaust Remembrance Day).

*Michael Katchen '05, Founder & CEO, Wealthsimple*

*“I had teachers at the school who taught me how to think. They would challenge us to come up with an opinion and defend it – to have an independent point of view. That is one of the most formative skills I learned.”*





## New Stream

**S**ince the mid-90s, our New Stream program has welcomed students from a wide range of educational backgrounds – many of whom are completely new to Jewish learning.

The program is open to students from public schools and secular independent schools, along with those who have been out of the Jewish day school system since the end of Grade 5.

This tailor-made program encompasses Jewish Studies only. This means that New Stream students discover and engage in Jewish learning together, and are fully integrated with the rest of their cohort for General Studies classes and extracurricular opportunities.

Just like all students at TanenbaumCHAT, New Stream students take four Jewish Studies subjects each year. With the exception of Ivrit (Hebrew language), all these courses are taught in English. By the time they reach Grade 12, New Stream students are equipped to become mainstreamed into the full range of Jewish Studies electives.

As we like to say: New to Jewish learning? New Stream is for you!

**Please note that entry into New Stream is in Grade 9 and applications for Grade 10 are considered on a case-by-case basis.**

**Chloe Perlon '22**

*“What I love most about New Stream is that everyone comes from unique experiences but when we join together we strengthen our ties between the Jewish community and Israel. The New Stream program has provided me the opportunity to be a part of a tight-knit community of friends.”*

**Gabriella Treitel '22**

*“New Stream has shown me the power and value of a Jewish community. In just four short years, we can speak and read Hebrew and share stories from our historical past, thus allowing New Stream students to play a more meaningful and active role in the Jewish community.”*



# General Studies

Our school offers a full General Studies program that leads to the Ontario Secondary School Diploma (OSSD). Along with required courses, more than 100 electives allow students to round out their studies based on personal preferences as well as requirements for post-secondary programs.

Our courses are wide ranging and offer enriched learning environments that encourage students to gain confidence, tackle problems, take risks, and freely express their ideas. We foster innovation, creativity and collaboration so that our students are well prepared for the challenges of today's fast-moving world.

Our dual curriculum and extensive extracurricular program are excellent primers for life after TanenbaumCHAT. Feedback from universities, colleges and our graduates themselves indicates overwhelmingly that our students are equipped for the rigours of post-secondary study and cope exceptionally well with their workloads and commitments.

**Our facilities include:**

- Abramsky Family Art Studio
- Buckstein Family Fitness Centre
- Gales Family Engineering & Robotics Workshop, in conjunction with the Anita and Daniel Chai Engineering Academy
- Gorewicz Music Studio
- Greenberg and Samuel Families Greenhouse
- Guttman Family Science Wing featuring state-of-the-art science labs
- Hennick Family Atrium
- Cooki & Barry Levy Centre for Torah Study (Beit Midrash/The Mercaz)
- Matlow Black Box Theatre
- Meyer/Finkelstein Gymnasium
- Ossip and Flatt Families Business Boardrooms (for business studies courses)
- Singer and Zagdanski Families Learning Resource Centre

*Tessa Rootenberg '14, Genetic Counselor, Weill Cornell Medicine*

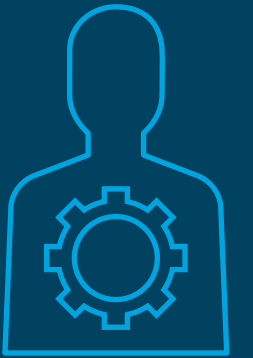
*“High school served as the core foundation for my university and graduate school education, and equipped me with tools for academic and professional success. The TanenbaumCHAT faculty went above and beyond, and helped me realize the standards to which I should aspire.”*





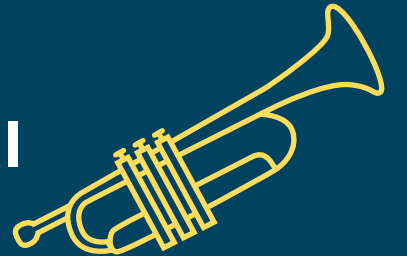
## Grade 9 electives

**The Anita & Daniel  
Chai Engineering  
Academy – Computer  
Technology**



**Drama**

**Music Instrumental**



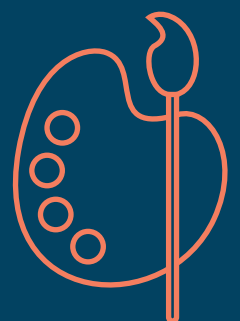
**Music Vocals**

**Physical Education**



**Technology**

**Visual Art**





# TanenbaumCHAT

## Quick Facts



Founded  
in 1961

**Largest** Jewish  
community  
high school in  
**North America**



**24%** of new students  
enter New Stream



More than **9,500** alumni

Over **75** clubs and committees



Tikun Olam

Jesin-Neuberger Community  
Service Program  
Students collectively complete **more than 27,000 hours**  
of community service annually



Daily  
**optional *Minyan***



Over **20%**  
of current faculty and  
current parents are  
TanenbaumCHAT alumni



Busing options  
are available

Over **100** electives,  
Grades 9 to 12



- Get involved!**  
Parent Engagement  
Committees
- ▶ Events & Programs
  - ▶ Staff Appreciation
  - ▶ Parent Ambassadors
  - ▶ Power of Grads
  - ▶ Community Campaign
  - ▶ Major Gifts

**29** 

**TanenbaumCHAT**  
**sports teams** compete  
in the TDCAA



# Student Support

**W**e recognize that every child has unique social, emotional and academic needs and are committed to creating an environment in which all our students have the opportunity to thrive. The Student Services team is coordinated by the Director of Student Services and comprises the Centre for Differentiated Learning (CDL), the Deans’ Office, and the Guidance Department. Together, they offer a comprehensive and multi-disciplinary approach to supporting the whole student. We see parents and guardians as active partners in this endeavour.

## Freedman Centre for Differentiated Learning & Nussbaum Jewish Studies Remediation Centre

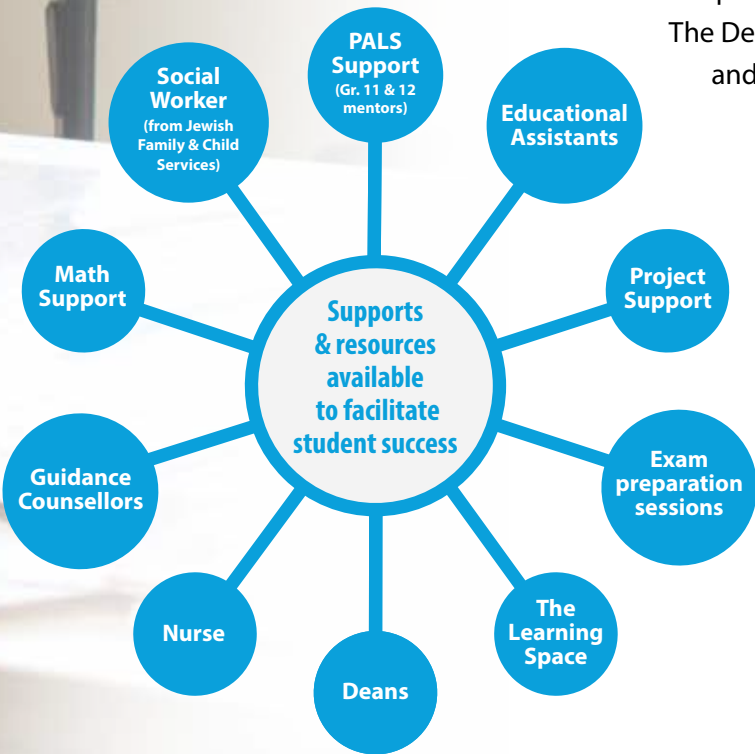
The CDL may provide support to students with exceptional learning and academic needs who have a current psycho-educational assessment. Through ongoing consultation with parents and students, the CDL oversees academic accommodations to help ensure that the student’s unique learning profile is addressed in all academic and extracurricular settings.

## Rotman/Rohringer Deans’ Office

The Deans’ Office offers students and parents an added layer of support. The Deans oversee matters related to managing behavioural and school expectations, workload, tardiness, absences due to illness, and many other important issues in the life of a high school student. The Deans are available to assist in all aspects of school and teenage life.

## Guidance Department

A team of Guidance Counsellors advises students on course selection and personal educational planning, career counselling, university and college entrance, and study programs in Israel. Confidential personal counselling is also offered to students who wish to discuss academic, social or personal issues.







## Israel Engagement and Shabbatons

Instilling a strong and vibrant connection to the State of Israel enriches students' identities as Jews and fosters an understanding of the important role Israel plays on the global stage and in the lives of Jews around the world.

Israel engagement is a shared vision, part of the consciousness of all our teachers and educators. It pervades our curricular and extracurricular programming and infuses the celebration of Jewish holidays. We also emphasize the centrality of the Hebrew language in creating a strong bond with Israel. Through connecting with staff, guests and visiting speakers, our students develop relationships with Israeli peers and other Israeli role models.

It's been said that more than the Jewish people have kept Shabbat, Shabbat has kept the Jewish people. This idea comes alive on every TanenbaumCHAT *Shabbaton* (weekend retreat), during which students enjoy a unique opportunity to celebrate Shabbat together and have a safe place to talk about personal practices and beliefs. Teachers, older peers and young alumni serve as *madrachim* (guides) and lead participants in fun and creative activities and meaningful discussions. There is also plenty of singing around the campfire – in English and in Hebrew!

*Jason Mausberg, current parent*

*“We have experienced an unbelievable community environment led by remarkable, caring, knowledgeable and wise teachers and administrators. The real foundational strength has been the love of learning that has been fostered within the students and the love of teaching that exists within the staff.”*





Josh Sable '90, Co-Director of Student Activities, TanenbaumCHAT

“Many of our students find their voices through our dynamic extracurricular programs. Our students are involved in an incredibly diverse collection of student activities that are interactive, creative and challenging, and ultimately help shape their identities and skills.”

# Extracurriculars

TanenbaumCHAT enjoys a lively school culture and *ruach* (spirit) with an extensive roster of extracurricular activities. More than 75 clubs and committees provide a full array of options. Students can deepen existing interests or explore new ones, strengthen their skills, make new friends and take on leadership roles. There is an active Student Council and there are many special events throughout the year including a school musical, a dance/fashion show, a talent show, school-wide celebrations, carnivals and more.

## Clubs, committees, shows and special events\*:

- |                            |                                     |                            |
|----------------------------|-------------------------------------|----------------------------|
| • Ambassadors              | • Film Appreciation Club            | • Newspaper                |
| • Art Club                 | • Finance and Investment            | • Photography Club         |
| • Athletic Council         | • Foosball Club                     | • Play                     |
| • Black History Club       | • Girls in STEAM                    | • Politics Club            |
| • Book Club                | • Greenhouse                        | • Prom Committee           |
| • Bracelets for the Better | • Hiking Club                       | • Remembrance Day Assembly |
| • Business Council         | • Holocaust Education Committee     | • Shakespeare Club         |
| • Cars Club                | • HOSA                              | • Shalom Task Force        |
| • Chanukah Assembly        | • Indigenous Peoples Committee      | • Spirit Committee         |
| • Clothing and Food Drive  | • Introvert Club                    | • Spikeball Club           |
| • CHAT's Got Talent        | • Israel Engagement                 | • Student Council          |
| • Chess Club               | • Jewish Student Union              | • Taylor Swift Fan Club    |
| • Chidon HaTanach Club     | • Keshet                            | • Tech Committee           |
| • Choir                    | • Kindness Committee                | • Tikva Council            |
| • Coding Club              | • Knitting Club                     | • Travel Club              |
| • Cookbooks for a Cause    | • Madrichim (Shabbaton Leaders)     | • Trivia Team              |
| • Cycling Club             | • Mental Health Awareness Committee | • Ukulele Club             |
| • Debate Club              | • Minecraft Club                    | • Ve'ahavta Committee      |
| • DECA                     | • Model UN                          | • Yearbook                 |
| • Dance Fashion Show       | • Morning Minyan                    | • Yom HaAtzmaut Committee  |
| • Dungeons & Dragons       | • Music Appreciation                | • Yom HaShoah Committee    |
| • Empowering Women         |                                     | • Yom HaZikaron Committee  |
| • Equality Club            |                                     |                            |
| • Fantasy Sports Club      |                                     |                            |

\*Extracurricular offerings may vary annually.



# Athletics

Athletics are an important part of life at TanenbaumCHAT. The school routinely fields as many as 29 sports teams that play across three seasons. We compete in the Toronto District Catholic Athletic Association (TDCAA) and some of our teams also qualify for the Ontario Federation of School Athletic Associations (OFSAA) championships.

We are proud to host visiting schools from Israel and the US at our Israel Becker Invitational basketball tournament, and our basketball teams travel to the Weiner basketball tournament in Baltimore every year.

Our student Athletic Council helps run many athletic programs and intramural activities, and there are many ways for students to be involved – as team managers, student coaches, scorekeepers and fans. We are all Tigers!

## Our teams\*:

- Badminton
- Basketball
- Baseball
- Cross country
- Curling
- Field hockey
- Flag football
- Golf
- Boys Ice hockey (non-contact)
- Girls Ice hockey
- Ski
- Snowboard
- Soccer
- Softball
- Swimming
- Tennis
- Volleyball

\*tentative teams

Amy Werger '22

“TanenbaumCHAT athletics have allowed me to meet new people, get active, grow as a person and take on leadership roles. I’ve had the opportunity to organize and take part in athletic programs regardless of making it onto teams, and the connection I have to the athletics staff is one of the highlights of my time at the school.”







# The Journey Continues

Even as our students graduate and go out into the world to continue their journeys, they remain firmly a part of the TanenbaumCHAT family. Our alumni number more than 9,500. TanenbaumCHAT friendships endure and there is an ever-increasing number of three-generation alumni families. Many meet their life partners here, and later rejoin the school as parents, grandparents and staff. More than 20% of our staff members and current parents are alumni.

Alumni find ways to volunteer and give back to the school. They serve as board and committee members, visit classes to share their expertise with students, and donate their time and resources to strengthening the school. We are immensely proud of the fact that our alumni also contribute in numerous ways to the wider community, both within Jewish frameworks and beyond, in Toronto and much further afield. For TanenbaumCHAT alumni, it's never just "goodbye" but rather "*lehitraot*" – see you soon!

*Malka Lebi '97, TanenbaumCHAT teacher and current parent*

*"TanenbaumCHAT gives you a foundation for the rest of your life and provides you with a framework Jewishly, socially and academically. It makes you proud of who you are."*



# Tuition

Enhancing tuition accessibility is a priority for us and we welcome students from a wide spectrum of economic backgrounds. In the 2023/24 school year, we were able to support 23% of our families with financial assistance. We encourage all families to apply to our school, and are honoured to partner with them to help them achieve their goal of sending their child to TanenbaumCHAT.

Based on combined family income, families may be eligible for reduction in fees through one of two programs:

- the UJA Community Scholarships Program
- the TanenbaumCHAT Tuition Accessibility Program (TTAP)

All families automatically receive tuition assistance information, and both programs are completely confidential.

Tuition for 2024/25 is \$23,900. Next year's tuition will be set in April 2025.

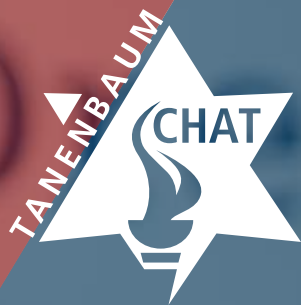
Please note that a portion of the tuition fee may be eligible for a Canadian charitable tax receipt.

Our Powering TanenbaumCHAT annual campaign is dedicated to supporting tuition assistance at our school, and is funded through the generosity of our parents, grandparents, alumni and friends.

To learn more, please visit our website at: [www.tanenbaumchat.org/tuition](http://www.tanenbaumchat.org/tuition)

or contact: Angela Buslovich  
at [abuslovich@tanenbaumchat.org](mailto:abuslovich@tanenbaumchat.org)





**TanenbaumCHAT**

200 Wilmington Avenue  
Toronto, ON M3H 5J8

416-636-5984

[findyourself@tanenbaumchat.org](mailto:findyourself@tanenbaumchat.org)

[www.tanenbaumchat.org](http://www.tanenbaumchat.org)

Follow us @tanenbaumchat



TanenbaumCHAT Alumni  
Association

**APPLY NOW** [www.tanenbaumchat.org/apply](http://www.tanenbaumchat.org/apply)  
**Application deadline:** December 1, 2024



**UJA FEDERATION** | JULIA AND HENRY KOSCHITZKY  
of Greater Toronto | CENTRE FOR JEWISH EDUCATION